



Do you need additional food?
Are you 60 or older?
Do you live in Jackson County?
Do you meet the income limits?

HOW TO ENROLL

Email lsmart@accesshelps.org or call
 541-774-4336.
 Have proof of household income, age,
 and address and we'll get you signed
 up for the program.

SE HABLA ESPAÑOL



Important Information

In accordance with Federal law and U.S. Department of Agriculture policy, this institution is prohibited from discriminating on the basis of race, color, national origin, sex, age or disability. To file a complaint of discrimination, write USDA, Director, Office of Civil Rights, Room 326-W, Whitten Building, 1400 Independence Avenue SW, Washington DC 20250-9410 or call 202-720-5964 (voice and TDD). ACCESS and the USDA are equal opportunity providers and employers.

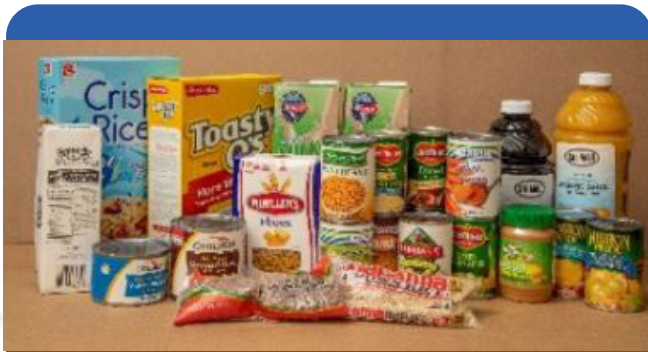


Commodity Supplemental Food Program (CSFP)

Established by the USDA



FOOD WARMTH SHELTER



Program Information

The Commodity Supplemental Food Program (CSFP) is a supplemental food program established by the U.S. Department of Agriculture (USDA). ACCESS is contracted with the Oregon Housing and Community Services to administer the program in Jackson County.

The CSFP program at ACCESS aims to improve the health of low-income individuals of at least 60 years of age.

CSFP food packages do not provide a complete diet but are good sources of the nutrients typically lacking in the target population's diets.

Those in the CSFP program will also receive information on other programs such as Medicaid, food stamps and WIC.

What are the requirements to get food through CSFP?

Individuals age 60 and above who reside in Jackson County, and have incomes at or below 130% of Federal Poverty Income Guidelines. Federal Poverty Income Guidelines are revised annually to reflect changes in the Consumer Price Index.

2021 CSFP Income Guidelines			
Household Size	Annual	Monthly	Weekly
1	\$16,588	\$1,383	\$319
2	22,412	1,868	431
3	28,236	2,353	543
4	34,060	2,839	655
For each additional household member, add:			
	5,824	486	112

What do I need to Enroll?

Proof of Age
Proof of County Residency

How often can I receive a box?

Two boxes will be distributed every other month at several locations throughout the county. The number of individuals that ACCESS can sign-up for the program is limited. A waiting list of potential clients will be established for future openings.

What food will be in the food boxes?

Food packages include a variety of foods, such as cereal, shelf-stable milk, juice, oats, rice, pasta, dry egg mix, peanut butter, dry beans or peas, canned meat, poultry or tuna, canned fruits and vegetables.

CSFP products are first quality items purchased by the USDA specifically for this program. Every other month, participants will receive approximately 80 pounds of food.



Sign Up Today

Call: 541-774-4336

Email: smart@accesshelps.org

Address:

**3630 Aviation Way
Medford OR 97501**